

R Cadherin Antibody
Rabbit mAb
Catalog # AP92877**Specification**

R Cadherin Antibody - Product Information

Application	WB
Primary Accession	P55283
Reactivity	Rat
Clonality	Monoclonal
Other Names	
Cadherin 4; cdh4; R CAD; Retinal cadherin;	
Isotype	Rabbit IgG
Host	Rabbit
Calculated MW	100281 Da

R Cadherin Antibody - Additional Information

Dilution	WB~~1:1000
Purification	Affinity-chromatography
Immunogen	A synthesized peptide derived from human R Cadherin
Description	Cadherins are calcium dependent cell adhesion proteins. They preferentially interact with themselves in a homophilic manner in connecting cells; cadherins may thus contribute to the sorting of heterogeneous cell types. May play an important role in retinal development.
Storage Condition and Buffer	Rabbit IgG in phosphate buffered saline , pH 7.4, 150mM NaCl, 0.02% sodium azide and 50% glycerol. Store at +4°C short term. Store at -20°C long term. Avoid freeze / thaw cycle.

R Cadherin Antibody - Protein Information**Name** CDH4**Function**

Cadherins are calcium-dependent cell adhesion proteins. They preferentially interact with themselves in a homophilic manner in connecting cells; cadherins may thus contribute to the sorting of heterogeneous cell types. May play an important role in retinal development.

Cellular Location

Cell membrane; Single-pass type I membrane protein

Tissue Location

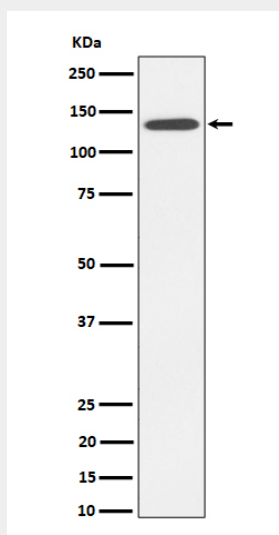
Expressed mainly in brain but also found in other tissues

R Cadherin Antibody - Protocols

Provided below are standard protocols that you may find useful for product applications.

- [Western Blot](#)
- [Blocking Peptides](#)
- [Dot Blot](#)
- [Immunohistochemistry](#)
- [Immunofluorescence](#)
- [Immunoprecipitation](#)
- [Flow Cytometry](#)
- [Cell Culture](#)

R Cadherin Antibody - Images



Western blot analysis of R Cadherin expression in HepG2 cell lysate.